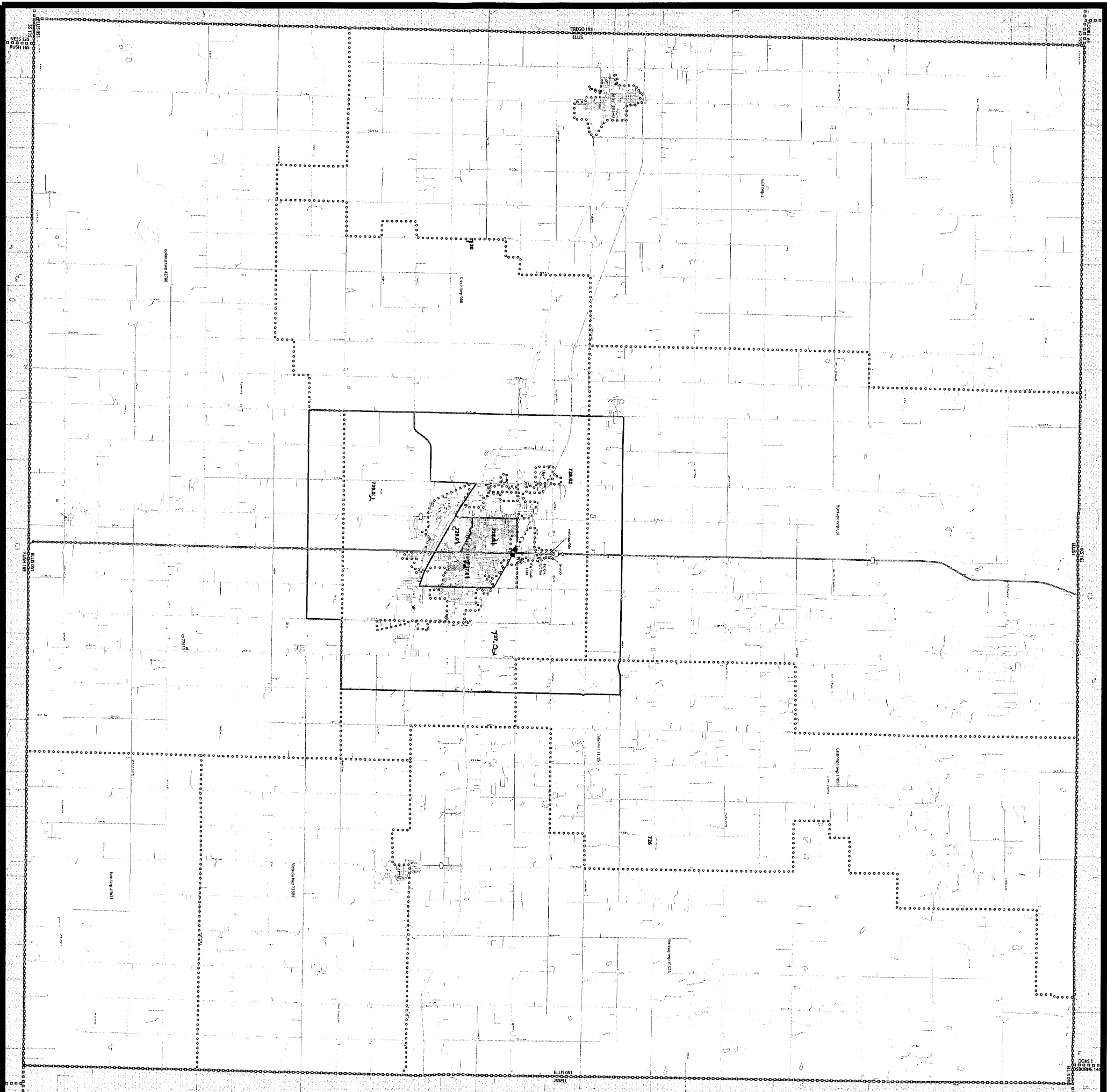


2020 CENSUS - CENSUS TRACT REFERENCE MAP: ELLIS COUNTY, KS



LEGEND

SYMBOL	DESCRIPTION
--- (Solid Line)	Parent Sheet Boundary
- - - (Dashed Line)	Tract Boundary
· · · (Dotted Line)	Tract Boundary
--- (Solid Line)	Water
--- (Solid Line)	Railroad
--- (Solid Line)	Highway
--- (Solid Line)	County Line
--- (Solid Line)	Section Line
--- (Solid Line)	Range Line
--- (Solid Line)	Township Line
--- (Solid Line)	Meridian Line
--- (Solid Line)	Section Line
--- (Solid Line)	Range Line
--- (Solid Line)	Township Line
--- (Solid Line)	Meridian Line

At the time of the 2020 Census, the population of Ellis County, Kansas was 10,100. The population density was 10.1 persons per square mile. The population density was 10.1 persons per square mile. The population density was 10.1 persons per square mile.

U.S. DEPARTMENT OF COMMERCE, U.S. Census Bureau

Sheet 1 of 1 PARENT SHEET
 NAME: ELLIS COUNTY (051)
 COUNTY: ELLIS COUNTY (051)
 STATE: KANSAS (20)

2020 Census Reference Map
 Date: 2020-08-11
 Version: 1.0



